



### Our vision -

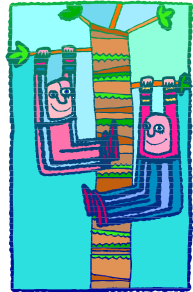
Creating healthy, safe families and communities by working together, appreciating who we are and what we have, discovering our dreams and building the strength and ability to turn them into reality



TE WHARE MANAAKI TANGATA

COUNSELLING - EDUCATION  
EMERGENCY  
ACCOMMODATION

221 Manchester St Christchurch  
t: 379 5645 f: 366 7371  
e: info@homeandfamily.net.nz  
www.homeandfamily.net.nz



## OTHER HOME & FAMILY PROGRAMMES

### POSITIVE PARENTING PROGRAMME

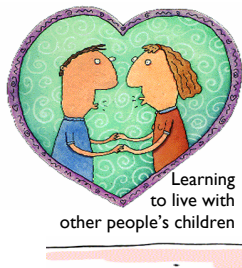
The Triple P Programme looks at practical effective strategies to manage common behavioural problems.  
4 week course \$45 includes workbook

### PROFESSIONAL COUNSELLING

for individuals, adolescents, children & families, including relationship counselling for couples.  
*Payment by donation*

### EMAIL COUNSELLING

counselling@homeandfamily.net.nz

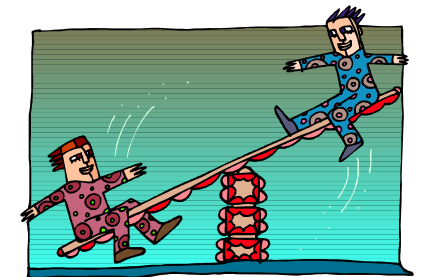


step parent  
support &  
education group

meets monthly

Learning to live with other people's children

Self Confidence  
/self awareness  
**WORKSHOPS**  
for women  
including  
**LifeMapping**



emergency  
supported  
accommodation  
programme

Caring  
Fathers

fostering positive fatherhood



Self  
empowerment  
**COURSES**  
for men & women

**EVERY TERM**

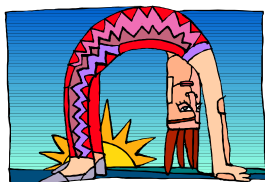


## Programme Background

Home and Family Society offers friendly and welcoming supported and emergency accommodation for men and women with children who are facing situations of personal difficulty and who would like some help to make positive changes in their lives.

Home and Family has two units:

- A House for women and children only
- 2 two bedroom flats for men/women/couples with children



A Social Worker and a team of Family Residential Workers work alongside families who spend between a day and six months in either the House or the Flat. Home and Family staff provide a positive and caring environment where families are able to effect positive changes, exploring life-goals, such as housing, parenting, personal relationships, employment, personal growth, budgeting, cooking and child-care.

Individual counselling with professional counsellors can be arranged; as well as courses on personal development, parenting etc.

### Cost

A residency fee is payable to assist with costs for rental, electricity, etc.

## Who uses the Programme?

### The House

The House is for women and children (age 0 – 12, or older by agreement) and pregnant women only. Each family has their own lockable room and there are shared bathroom, lounge and kitchen facilities. The back garden is fenced, has a small playground and is a safe and secure place for children to play. Staff are rostered on 24 hours a day, and are generally available to help, except

for some times in the week when training, shopping etc. The House can accommodate a maximum of 5 women and their children. Some women are facing emergency situations, such as eviction, or violent relationships and need immediate accommodation. Others come in agreement with another social services agency, such as Child Youth and Family, Early Start or the Mental Health Services.

### The Flats

The two bedroom, fully furnished flats are located close to the main house and available for men with children, women with children or couples with children. The flats are not staffed and families are expected to be largely self-supporting.



### Some feedback ...

#### From agencies -

“Positive role models by staff...”

“It’s a safe place...”

“Nice! A very supportive environment.”

“My client is doing the positive things that she needed to do.

Always lots of encouragement from staff.”

“The Programme has worked well. Very practical, especially the support plans.”

“Very insightful support.”

#### From clients -

“A nice friendly place to be living.”

“I found a sense of security for my children.”

“It was good to know there are people that do listen and understand.”

“Great - good opportunity to re assess, gain personal strengths.”

“Being able to sort out where my priorities lie.”

## Home & Family background

Home & Family are a social service agency and have been providing family based programmes to the people of Canterbury since 1908.

### Vision

At Home & Family our inspiring vision of safe and healthy communities feeds into well-developed strategic annual plans. All our services are evaluated regularly.

### Caring for Kids

Caring for children is the bedrock of our services: They are our future and we do all we can to look after their safety and development.

### Strengths

Appreciating and valuing “what is”. We believe in working to people’s strengths rather than concentrating on “what’s wrong”. We all know people are better able to make the changes they want when they are supported and encouraged.

### Values

Values matter!

Strengths - appreciating and valuing what is

Dreams - what might be

Discovery - what will be

Co-creation - an unfolding story being written in partnership by many

Accessibility - services are lo-cost or free.